



STAINLESS STEEL

14 & 16 GAUGE MULTI-STATION SINKS WITH TUBULAR LEGS & CROSS BRACING **TOE-PUSH OPERATED**



FC-FM-40FV Shown



FC-FM-60FV Shown

Item #: _____ Qty #: _____

Model #: _____

Project #: _____



FC-FM-120FV Shown



Foot Valves
Included

FEATURES:

8 1/2" high backsplash.

8" sink bowl depth.

Stainless steel "Z" brackets.

3 1/2" **K-6** rear basket drains.

Tubular stainless steel legs with flanged feet.

Toe-Push Operated: Includes six **K-104** toe-push valves and six **K-121** spouts.

CONSTRUCTION:

All TIG welded.

Welded areas blended to match adjacent surfaces and to a satin finish.

MATERIAL:

All 14 or 16 gauge type "304" stainless steel.

1 5/8" tubular "304" stainless steel supports.

MECHANICAL:

Single faucet hole punch at each station.

STANDARD - 8" BOWL DEPTH

# Of Stations	16 Gauge Sinks	14 Gauge Sinks	# of Spouts	# of Valves
2	FC-FM-40FV	FS-FM-40FV	2 Spouts	2 Valves
2	FC-FM-48FV	FS-FM-48FV	2 Spouts	2 Valves
3	FC-FM-60FV	FS-FM-60FV	3 Spouts	3 Valves
3	FC-FM-72FV	FS-FM-72FV	3 Spouts	3 Valves
4	FC-FM-80FV	FS-FM-80FV	4 Spouts	4 Valves
4	FC-FM-96FV	FS-FM-96FV	4 Spouts	4 Valves
5	FC-FM-100FV	FS-FM-100FV	5 Spouts	5 Valves
6	FC-FM-120FV	FS-FM-120FV	6 Spouts	6 Valves

WARNING: Equipment that include faucets on this page may contain a chemical known to the State of California to cause cancer, birth defects or other reproductive harm.



Customer Service Available To Assist You 1-800-645-3166 8:30 am - 7:00 pm E.S.T.

For Orders & Customer Service:

Email: customer@advancetabco.com or Fax: 631-242-6900

For Smart Fabrication™ Quotes:

Email: smartfab@advancetabco.com or Fax: 631-586-2933

REF-JJ

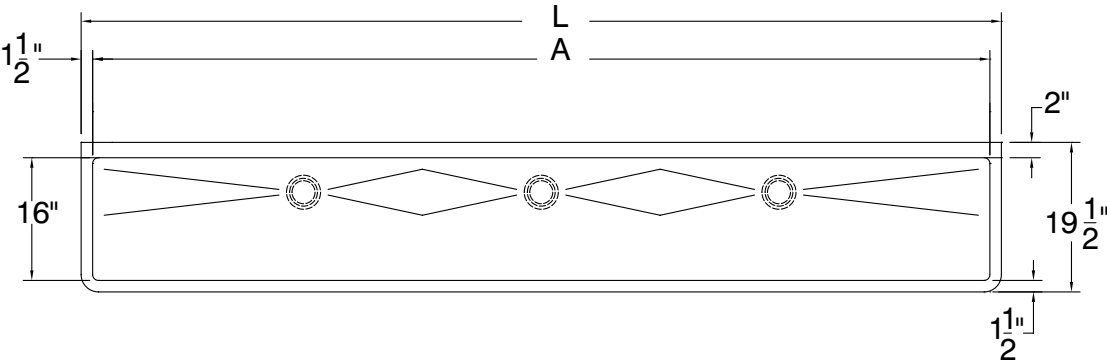
DETAILS and SPECIFICATIONS

TOL ± .500"

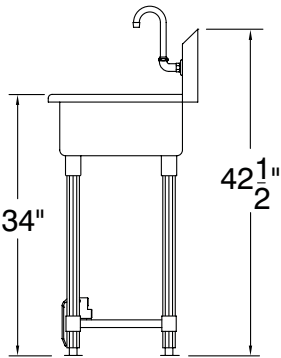
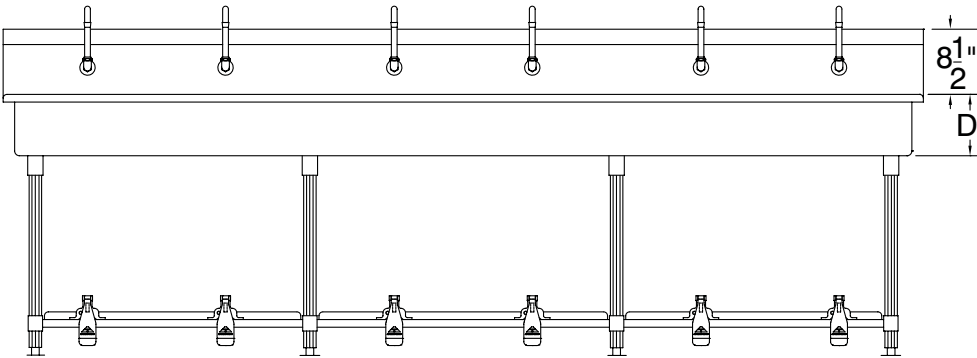
FITTINGS SUPPLIED AS SHOWN

ALL DIMENSIONS ARE TYPICAL

STAINLESS STEEL
MULTI-STATION SINKS WITH TUBULAR LEGS & CROSS BRACING
TOE-PUSH OPERATED



SEE PAGE 3
FOR
PLUMBING
ROUGH-INS



# Of Stations	L	16 Gauge Sinks	Wt.	16 Gauge Sinks	Wt.	A	# Of Drains	# Of Faucets	Cu.
STANDARD - 8" DEPTH									
2	40"	FC-FM-40FV	90	FS-FM-40FV	106	37"	1	2	30
2	48"	FC-FM-48FV	97	FS-FM-48FV	121	45"	1	2	30
3	60"	FC-FM-60FV	118	FS-FM-60FV	140	57"	1	3	43
3	72"	FC-FM-72FV	128	FS-FM-72FV	131	69"	1	3	43
4	80"	FC-FM-80FV	145	FS-FM-80FV	168	77"	1	4	57
4	96"	FC-FM-96FV	155	FS-FM-96FV	184	93"	1	4	57
5	100"	FC-FM-100FV	180	FS-FM-100FV	208	97"	2	5	70
6	120"	FC-FM-120FV	225	FS-FM-120FV	252	117"	3	6	83



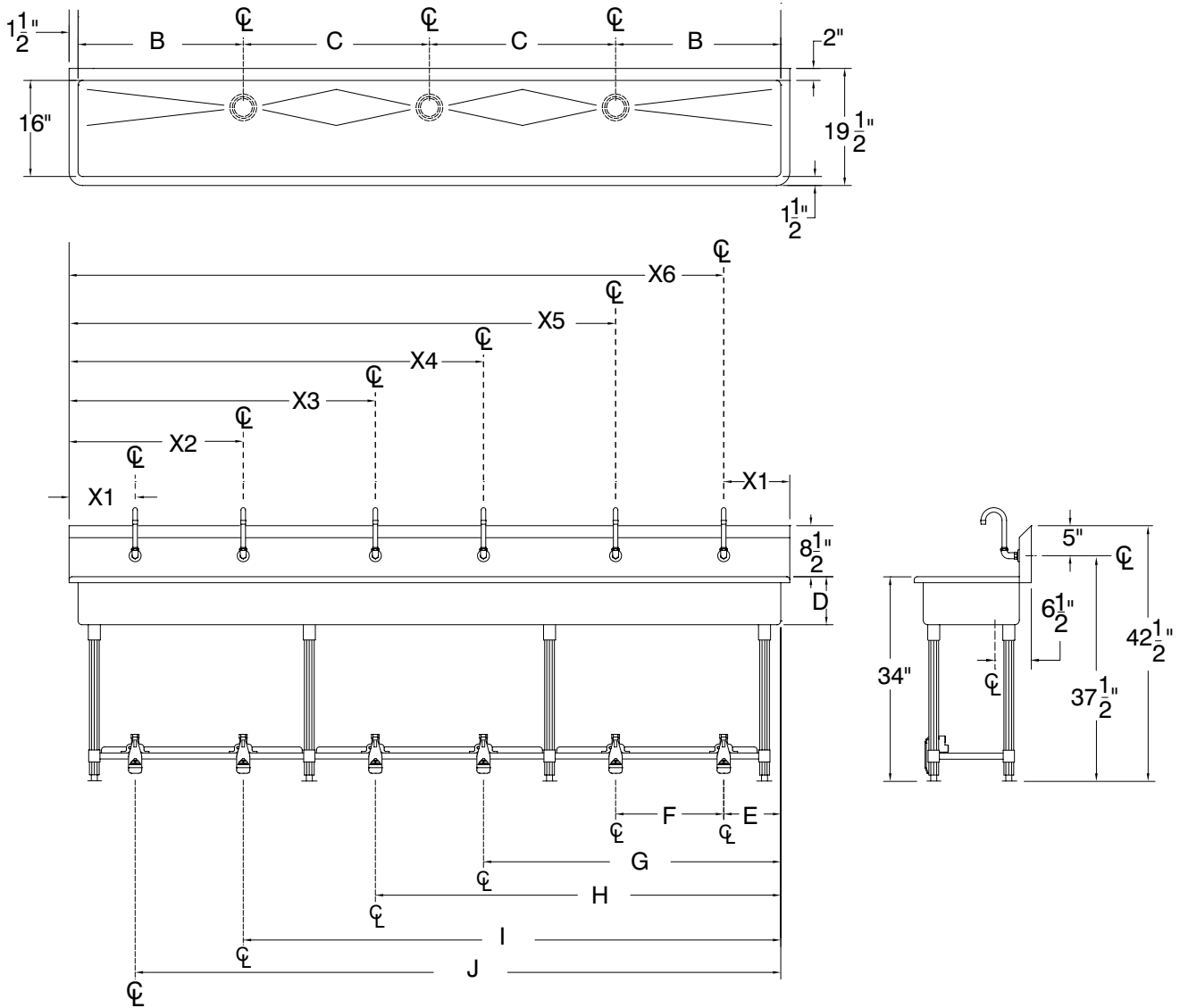
PLUMBING ROUGH-INS

TOL ± .500"

FITTINGS SUPPLIED AS SHOWN

ALL DIMENSIONS ARE TYPICAL

STAINLESS STEEL MULTI-STATION SINKS WITH TUBULAR LEGS & CROSS BRACING TOE-PUSH OPERATED



# Of Stations	L	Model	B	C	D	E	F	G	H	I	J	X1	X2	X3	X4	X5	X6
STANDARD - 8" DEPTH																	
2	40"	FC-FM-40FV	18 1/2"	N/A	8"	9.5"	27.5"	N/A	N/A	N/A	N/A	11"	29"	N/A	N/A	N/A	N/A
2	48"	FC-FM-48FV	22 1/2"	N/A	8"	13.5"	31.5"	N/A	N/A	N/A	N/A	15"	33"	N/A	N/A	N/A	N/A
3	60"	FC-FM-60FV	28 1/2"	N/A	8"	9.5"	19"	47.5"	N/A	N/A	N/A	11"	30"	49"	N/A	N/A	N/A
3	72"	FC-FM-72FV	34 1/2"	N/A	8"	15.5"	19"	53.5"	N/A	N/A	N/A	17"	36"	55"	N/A	N/A	N/A
4	80"	FC-FM-80FV	38 1/2"	N/A	8"	9.5"	18"	49.5"	67.5"	N/A	N/A	11"	29"	51"	69"	N/A	N/A
4	96"	FC-FM-96FV	24 1/32"	N/A	8"	13.5"	22"	57.5"	79.5"	N/A	N/A	15"	37"	59"	81"	N/A	N/A
5	100"	FC-FM-100FV	27 1/2"	42"	8"	9.5"	19.5"	48.5"	68"	87.5"	N/A	11"	30.5"	50"	69.5"	89"	N/A
6	120"	FC-FM-120FV	27 1/2"	31"	8"	9.5"	19.5"	48.5"	68"	67.5"	87.5"	11"	29"	51"	69"	91"	109"

