



Installation Instructions for 7-PS-62 HAND WASHING SINK



**CHECK FOR CONCEALED DAMAGE
FILE CLAIM WITH DELIVERING FREIGHT CARRIER**

Sinks manufactured by **ADVANCE TABCO®** are designed and constructed for the use of liquid containment. Suggested applications include Food Preparation, Manufacturing, Cooking, Laboratory and Service and the like. **ADVANCE TABCO®** does not recommend product use for activities employing harsh and active chemicals. Please consult factory regarding unusual applications.

⚠ WARNING: Equipment that includes a faucet may expose you to chemicals, including lead, that are known to the State of California to cause cancer or birth defects or other reproductive harm. For more Info., visit www.p65warnings.ca.gov.

CONTENTS INCLUDE:

- **(1) Hand Sink**
- **(1) Apron**
- **(1) Knee Valve**
- **(1) K-121 Gooseneck Faucet**
- **(1) K-6 Basket Drain**
- **(4) 1/4" x 20" x 3/4" Nuts & Hex Head Bolts**
- **(1) Wall Clip**

TOOLS REQUIRED:

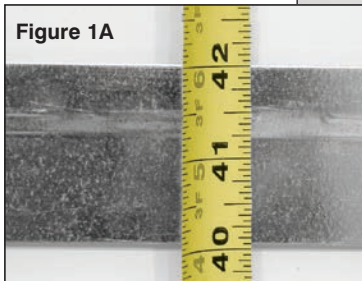
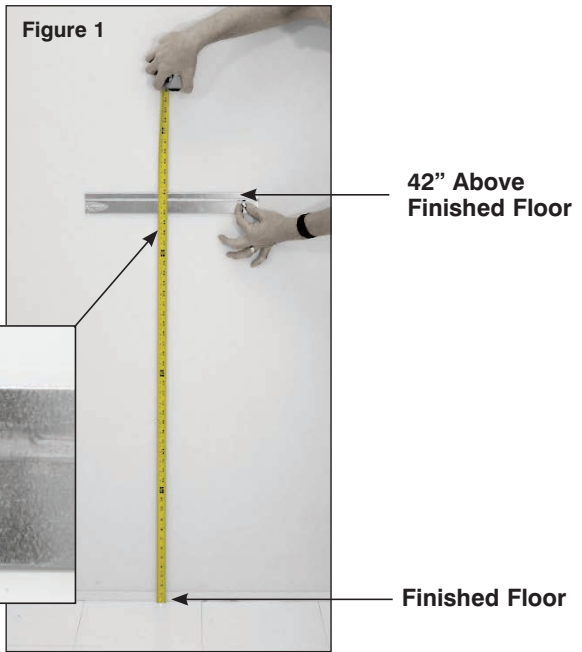
- **Tape Measure**
- **Screw Driver**
- **7/16" Open End Wrench**
- **Adjustable Wrench**
- **Drill Motor & Bits**
- **Level**
- **Safety Glasses**

INSTALLATION INSTRUCTIONS

Step 1:

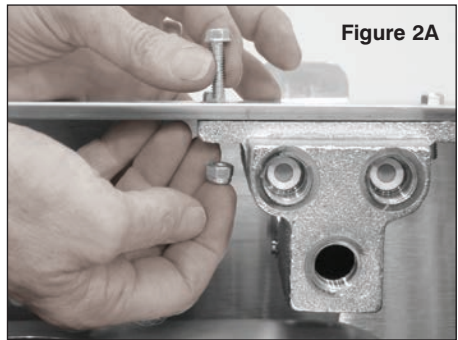
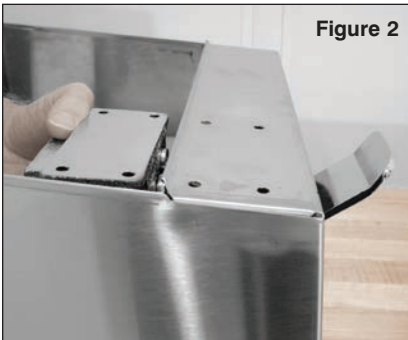
Position wall clip at 42" A.F.F. (Above Finished Floor). Ensure Wall Clip is level. See Photo Figures # 1 & 1A.

(Note: Hardware not provided.)



Step 2:

Install Knee Valve to Apron using - 1/4 x 20" x 3/4" hardware provided. See Photo Figures # 2 & 2A.



Step 3:

Pre-plumb hot and cold water supply to Knee Valve (at base of valve) according to local plumbing code.

Continued >>

Step 4:

Install faucet and drain to sink body.

Step 5:

Plumb connection (top outlet port) from Knee Valve to faucet.

Step 6:

Install sink body onto wall clip. Secure rear Apron flange to wall at keyhole locations. (Hardware not provided).

Step 7:

Connect Hot and Cold water supply to Knee Valve.

Step 8:

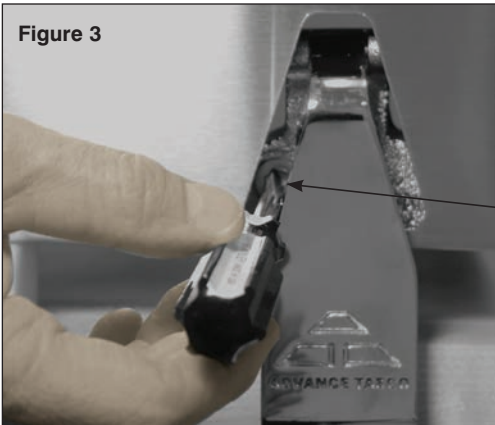
Connect drain to waste line.

Step 9:

Remove aerator and flush water system.

Step 10:

Adjust Hot Water at front of valve. See Photo Figure #3.



Step 11:

Check all water and drain connections for leaks.

